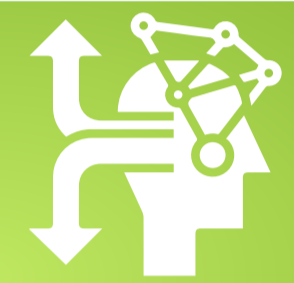




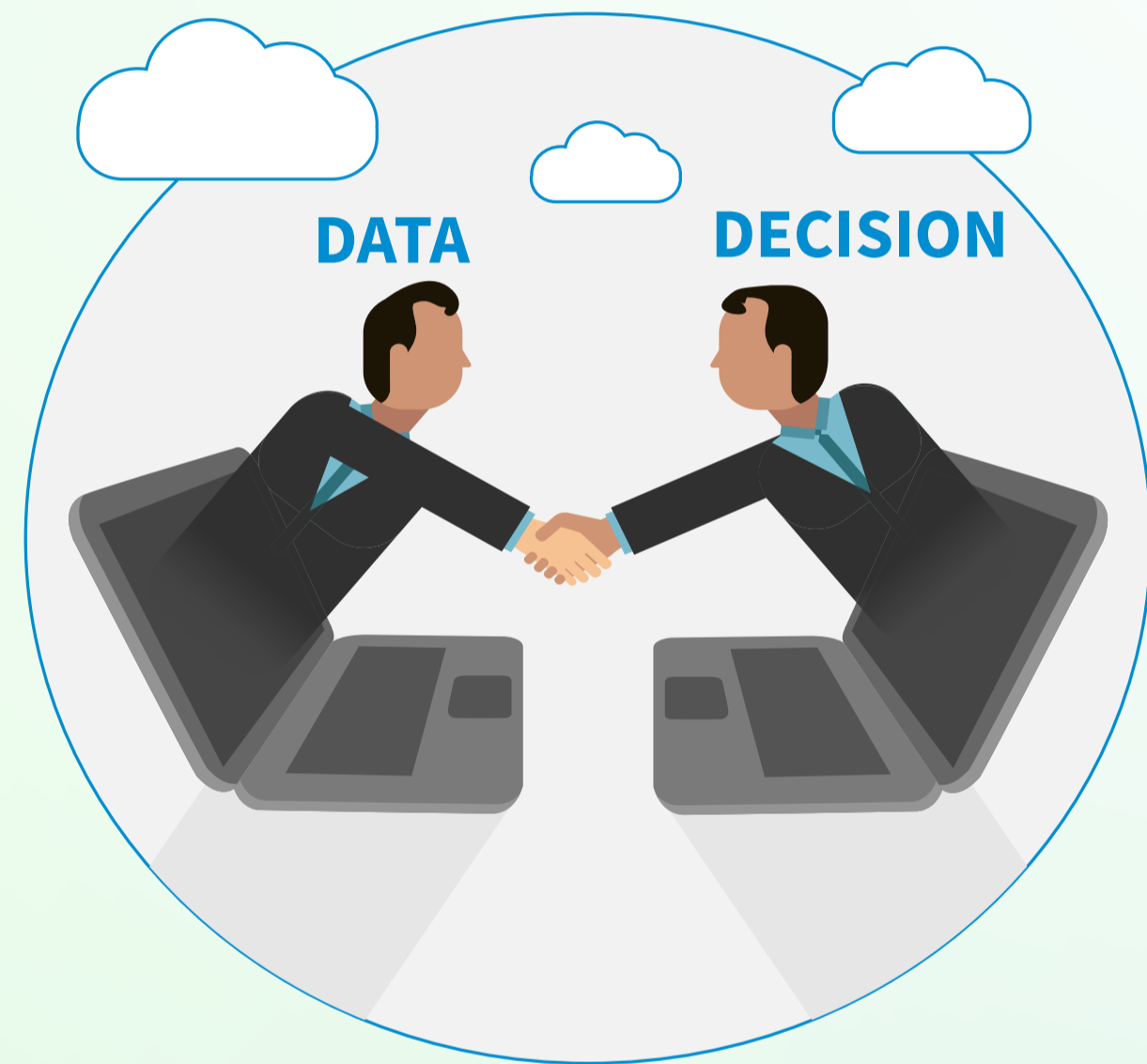
DATA USE



Is the use of evidence/data (routine and/or non-routine) in making decision (Planning, resource allocation, implementation, service provision, etc) with the ultimate goal of improving health outcome (service coverage and uptake, quality of care, reduced morbidity and mortality etc) and health system improvement.



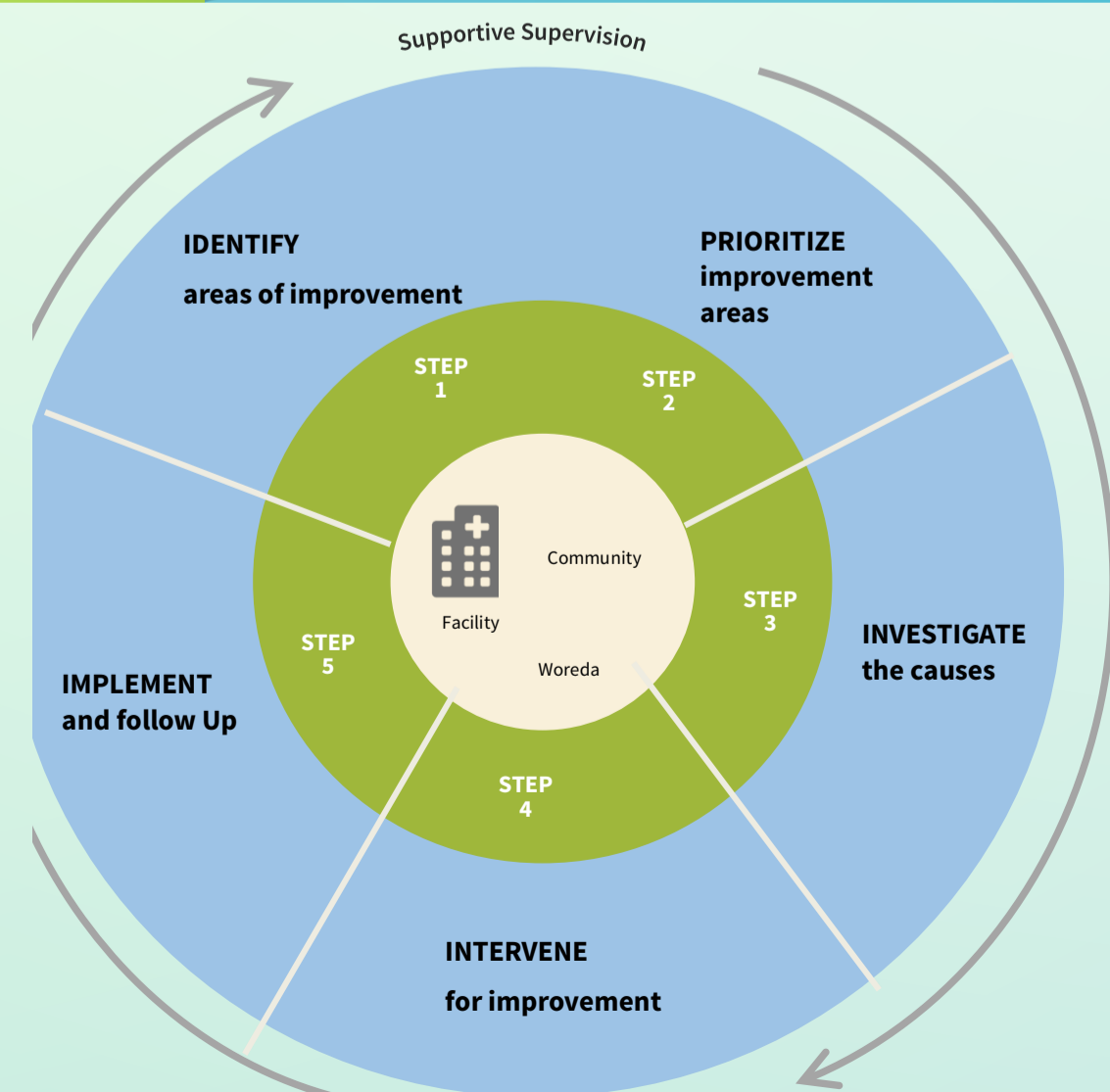
DATA AND DECISION



Decision without data (evidence) leads to wrong recommendation and a waste of resources



DATA USE CYCLE



Ethiopian health sector follows a five step process to facilitate the use of information for decision-making processes. Each step is described in great deal of detail and with their associated template in the data use manual.



TIPS: DATA USE FOR ACTION

- Most problems have local solutions
- PMT log book gives a step by step guide to the data use cycle
- Data use starts from a very good plan/target
- Use mix of all types of data (Coverage, quality, equity etc.)
- Ultimate goal of data use is improvement in health outcome & health system
- Data visualization (DHIS, displays etc.) Motivates data use
- Documenting data use results (example: improved ANC) is major, often overlooked, component of the package

**“I will use data to improve the health status of my community”
a health worker’s perspective**



SUMMARY OF DATA USE PLATFORMS/FORUMS

Major Data use platforms	Minimum Frequency	What they do
Performance Monitoring Team (PMT)	Monthly	<ul style="list-style-type: none"> - Review health data quality status - Review performance (coverage, equity, quality indicators etc): using 5 step cycle - Monitor implementation of action plan
Case team/ unit level performance review	Monthly	<ul style="list-style-type: none"> - Each unit conducts review of performance of its unit with great deal of detail - Happens before the PMT - Every case team/unit member is involved
Quality teams	Monthly	<ul style="list-style-type: none"> - Review quality based on standards and monitor implementation of reforms (EHSTG, HSTQ etc.) - The quality team leader should be PMT member representing the quality & equity indicators
Other platforms	Depends on the type of the platform	<ul style="list-style-type: none"> - Clinical review sessions, Morning sessions - Weekly data days - Death audit: review and response - Catchment meeting, PHCU meetings - Periodic review meeting - Woreda based planning, integrated & Program based SS - And other data based forums

A Championing leader uses data to scan the organization, plan appropriately, and monitor implementation regularly and critically envisioning the betterment of the community it serves.